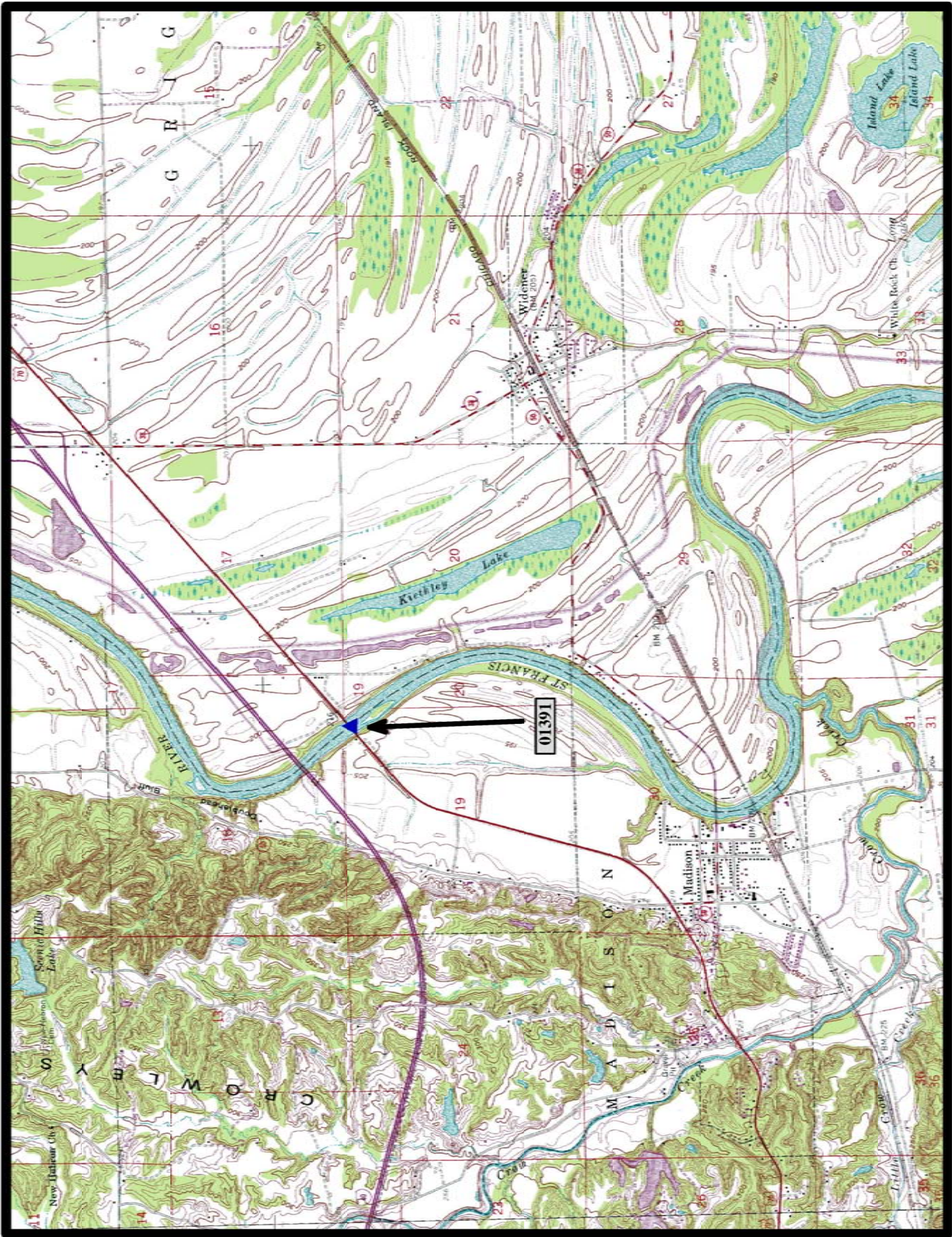


- ▲ In-Service Parker Thru Truss (5)
- ⊘ Demolished NR Parker Thru Truss (3)
- Preserved Parker Thru Truss (1)

Parker Thru Truss Bridges



HISTORIC BRIDGE #01391
US HIGHWAY 70
ST. FRANCIS COUNTY
PARKER THRU TRUSS
CROSSES - ST. FRANCIS RIVER
DATE OF CONSTRUCTION - 1930
BUILDER - WISCONSIN BRIDGE & IRON COMPANY, MILWAUKEE, WS
HISTORIC BRIDGE INVENTORY DATE - 1987
SHPO NUMBER - SF0040
HAER NUMBER - AR-20
DATE LISTED ON NATIONAL REGISTER - 4/9/1990
LAT./LONG. 35:02:11, -90:42:42.43

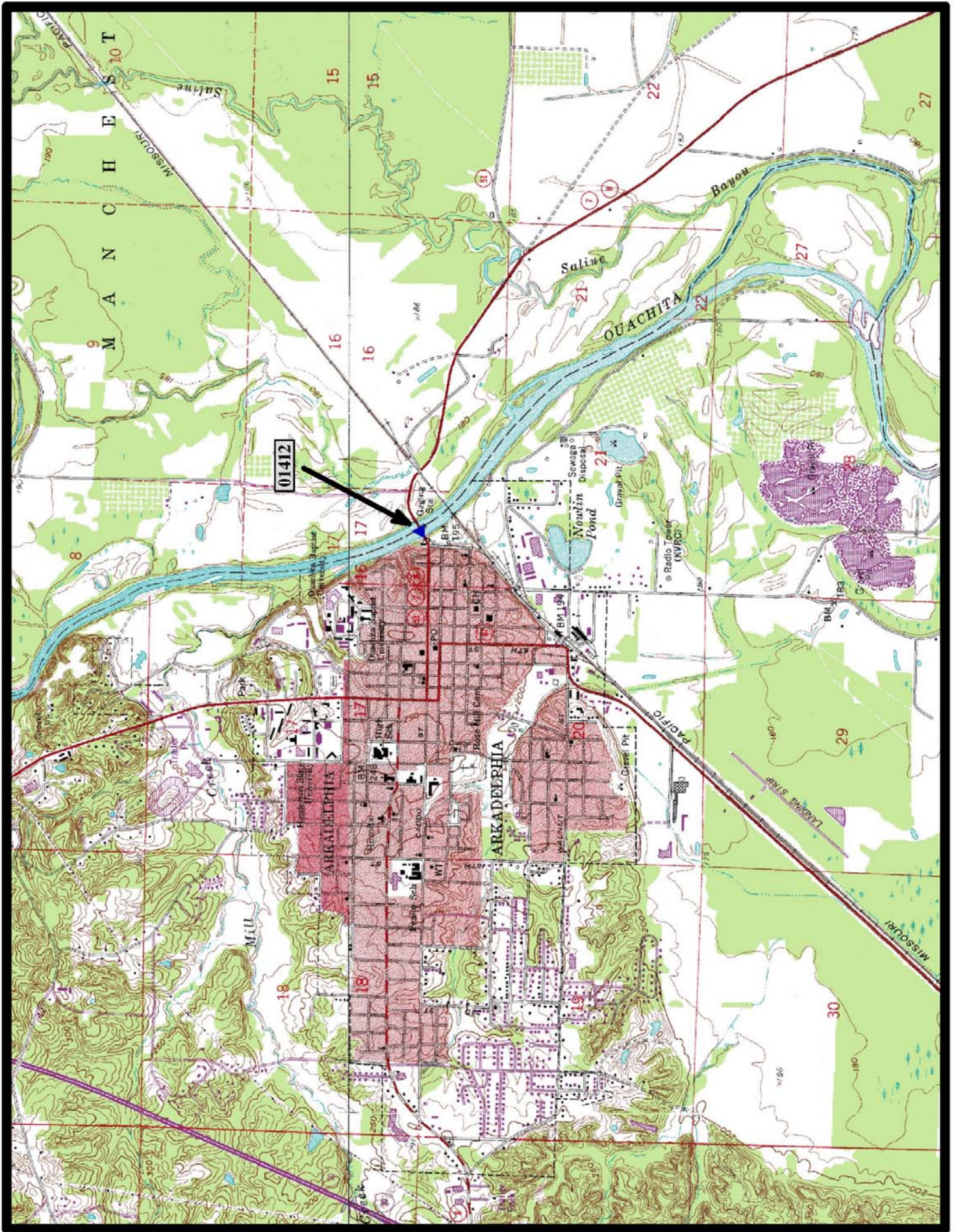


←
North

Madison 7.5 min. Quad



HISTORIC BRIDGE #01412
STATE HIGHWAY 51
CLARK COUNTY
PARKER THRU TRUSS
CROSSES - OUACHITA RIVER
DATE OF CONSTRUCTION – 1930
BUILDER - LUTEN BRIDGE COMPANY, LITTLE ROCK, AR
HISTORIC BRIDGE INVENTORY DATE - 2005
SHPO NUMBER – CL0650
HAER NUMBER -
DATE LISTED ON NATIONAL REGISTER - 2/1/2006
LAT./LONG. 34:07:16.72, -93:02:46.48

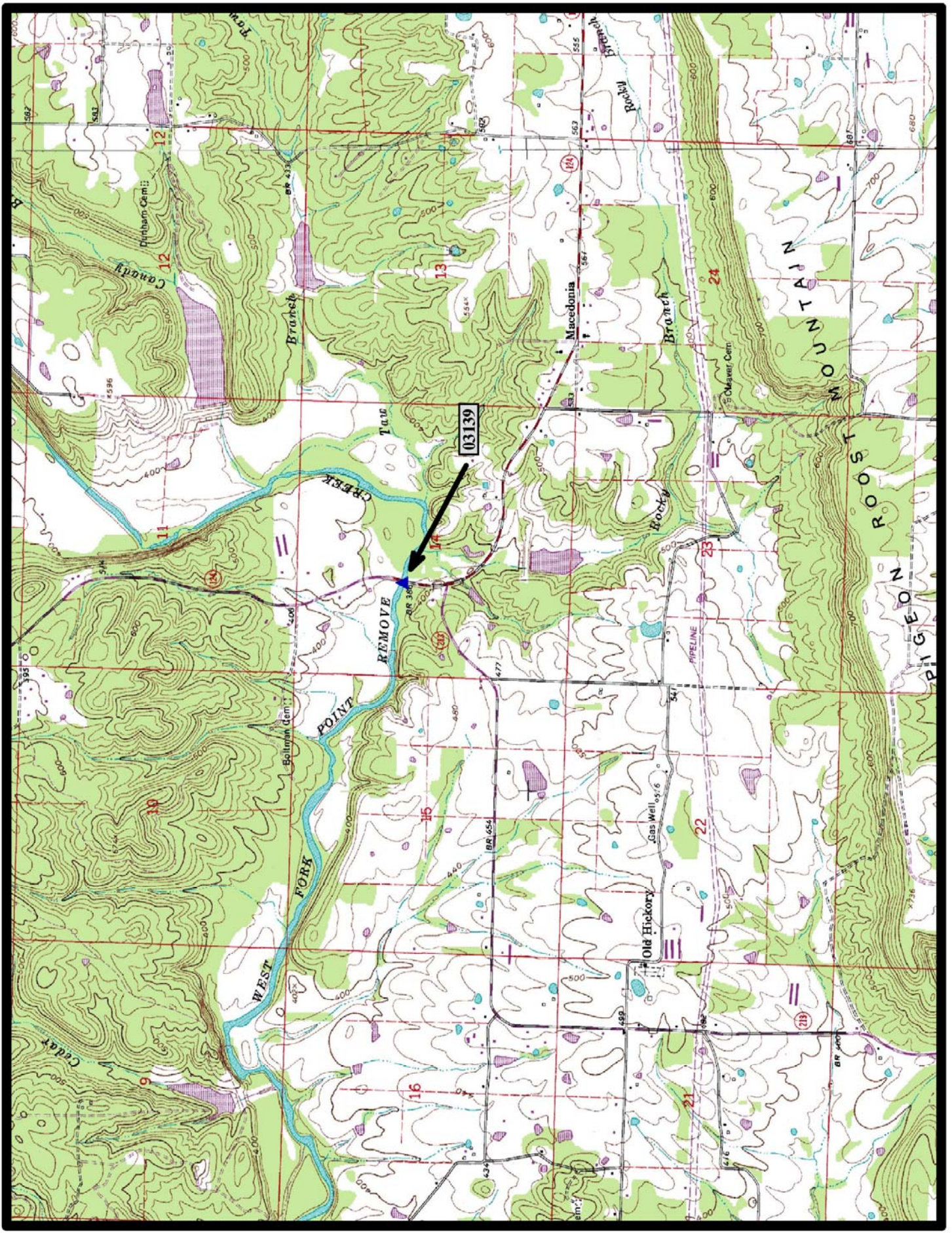


North

Arkadelphia 7.5 min. Quad



HISTORIC BRIDGE #03139
STATE HIGHWAY 124
CONWAY COUNTY
PARKER THRU TRUSS
CROSSES - WEST FORK POINT REMOVE CREEK
DATE OF CONSTRUCTION - 1957
BUILDER - FORSGREN BROTHERS, FORT SMITH, AR
HISTORIC BRIDGE INVENTORY DATE - 2005
SHPO NUMBER - CN0320
HAER NUMBER -
DATE LISTED ON NATIONAL REGISTER -
LAT./LONG. 35:20:23.94, -92:46:41.26

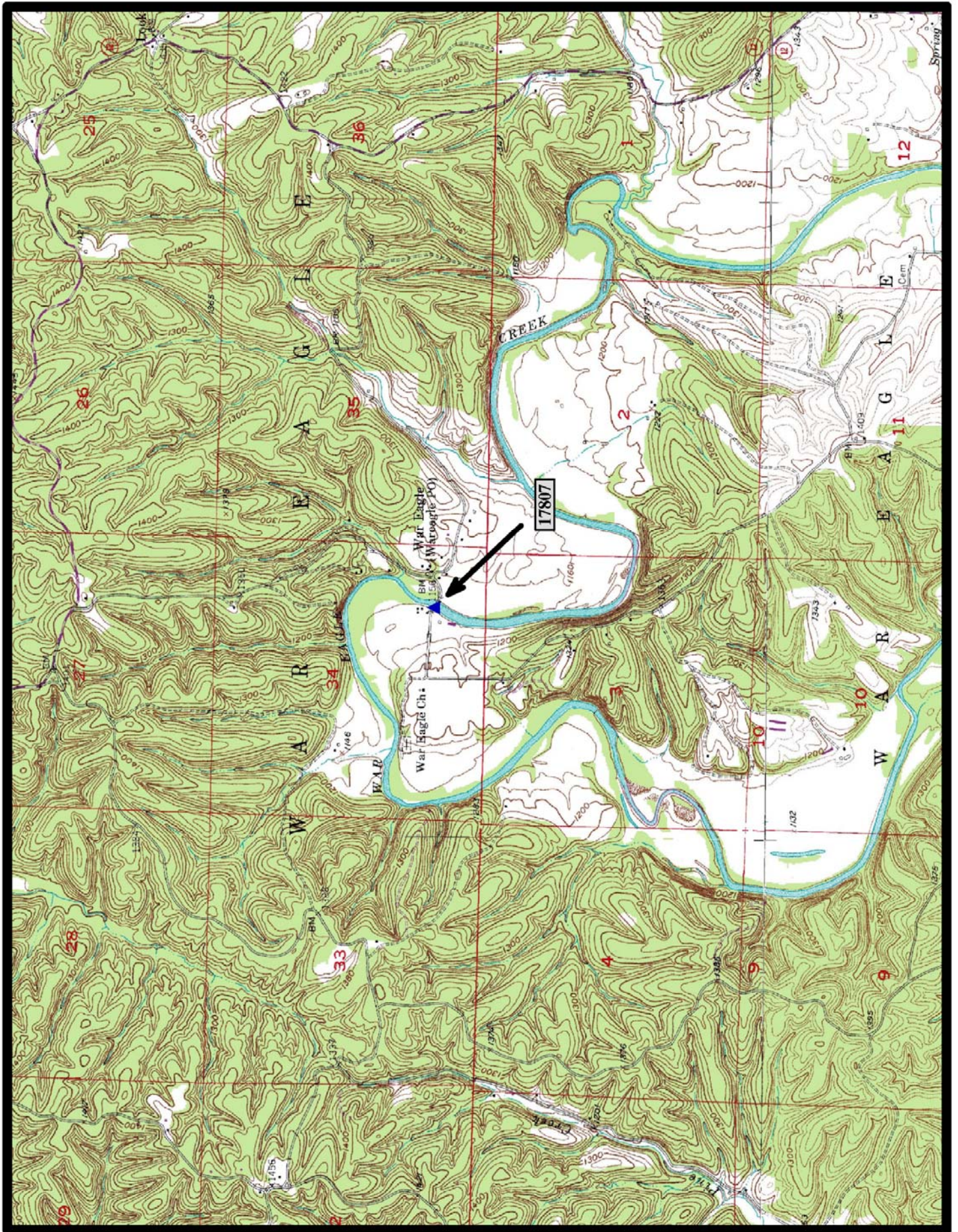


Hattville 7.5 min. Quad

North
↑



HISTORIC BRIDGE #17807
COUNTY ROAD 98
BENTON COUNTY
PARKER THRU TRUSS
CROSSES - WAR EAGLE CREEK
DATE OF CONSTRUCTION - 1907
BUILDER - ILLINOIS BRIDGE COMPANY, CHICAGO, IL
HISTORIC BRIDGE INVENTORY DATE - 1987
SHPO NUMBER - BE1417
HAER NUMBER - AR-50
DATE LISTED ON NATIONAL REGISTER - 10/19/1985
LAT./LONG. 36:16:03.24, -93:56:36.04

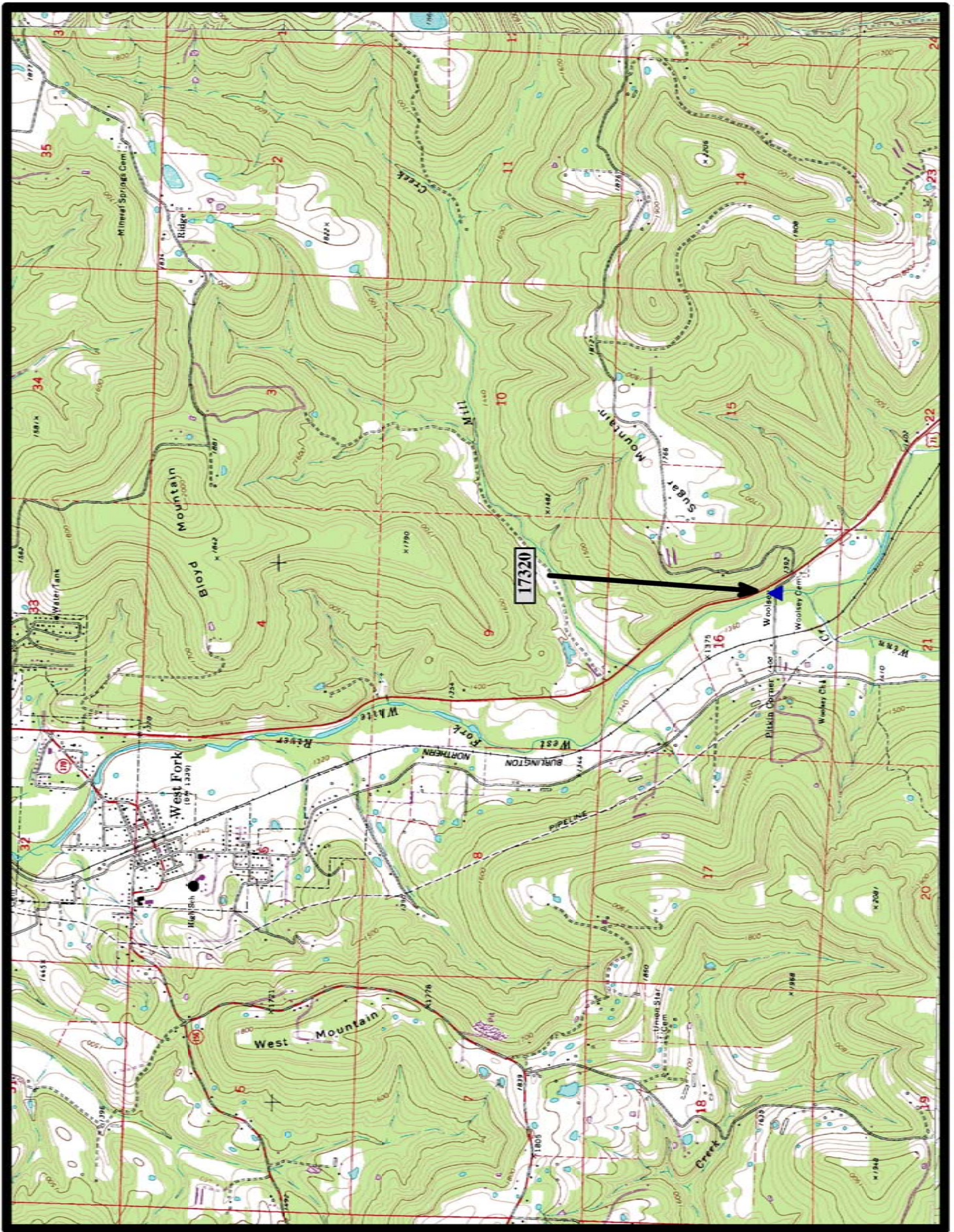


↑
North

War Eagle 7.5 min. Quad



HISTORIC BRIDGE #17320
COUNTY ROAD 3
WASHINGTON COUNTY
PARKER THRU TRUSS
CROSSES - WEST FORK WHITE RIVER
DATE OF CONSTRUCTION - 1925
BUILDER - UNKNOWN
HISTORIC BRIDGE INVENTORY DATE - 2000
SHPO NUMBER - WA0869
HAER NUMBER - AR-63
DATE LISTED ON NATIONAL REGISTER - 6/9/2000
LAT./LONG. 35:53:07.58, -94:10:08.34

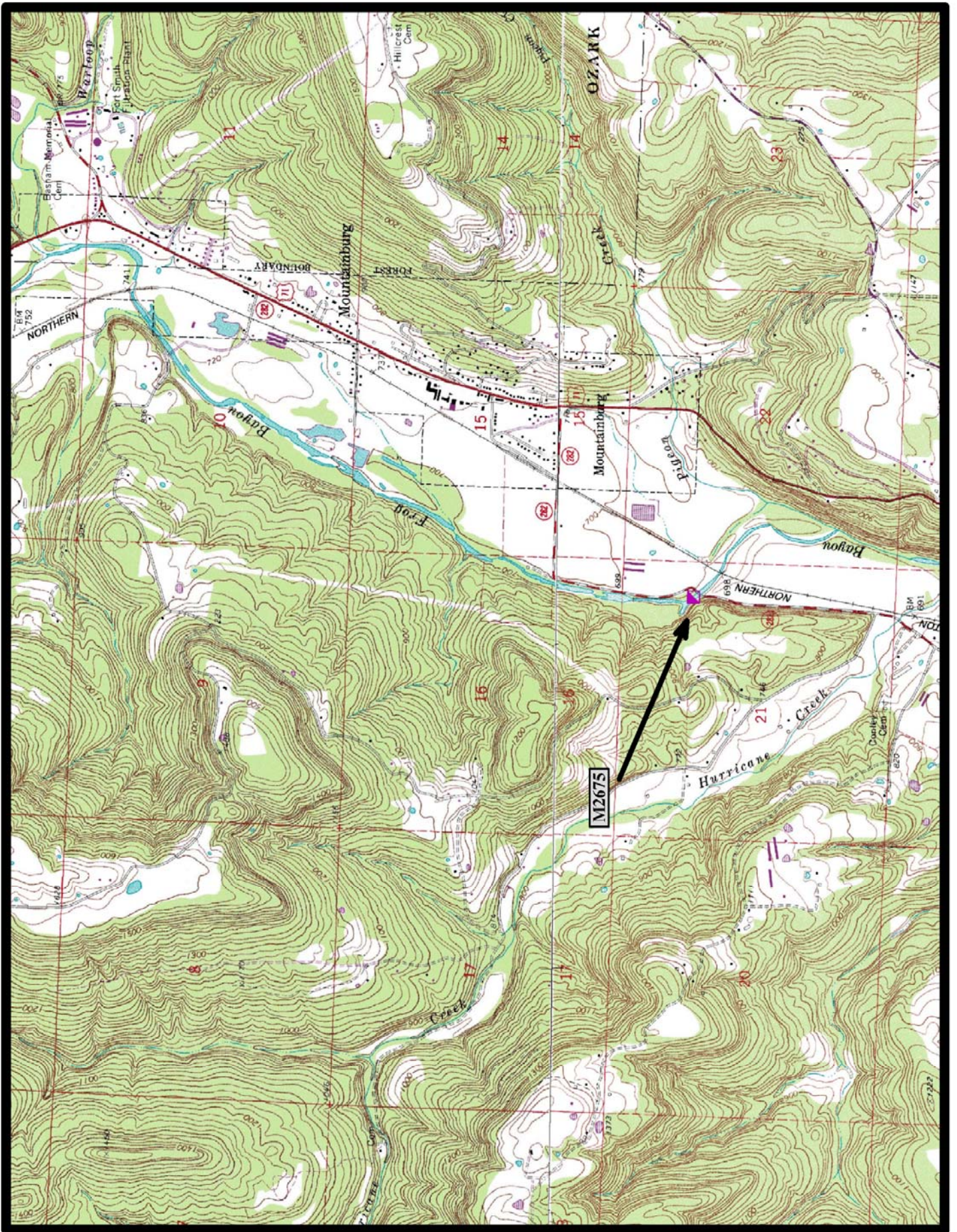


↑
North

West Fork 7.5 min. Quad



PRESERVED HISTORIC BRIDGE #M2675
BYPASSED SECTION OF STATE HIGHWAY 282
CRAWFORD COUNTY
PARKER THRU TRUSS
CROSSES - FROG BAYOU
DATE OF CONSTRUCTION - 1921-22
BUILDER - J.S. TERRY CONSTRUCTION COMPANY, POTEAU, OK
HISTORIC BRIDGE INVENTORY DATE - 1995
SHPO NUMBER - CW0160
HAER NUMBER - AR-65
DATE LISTED ON NATIONAL REGISTER - 5/26/1995
LAT./LONG. 35:37:03.63, -94:11:02.58



←
North

Mountainburg SW 7.5 min. Quad